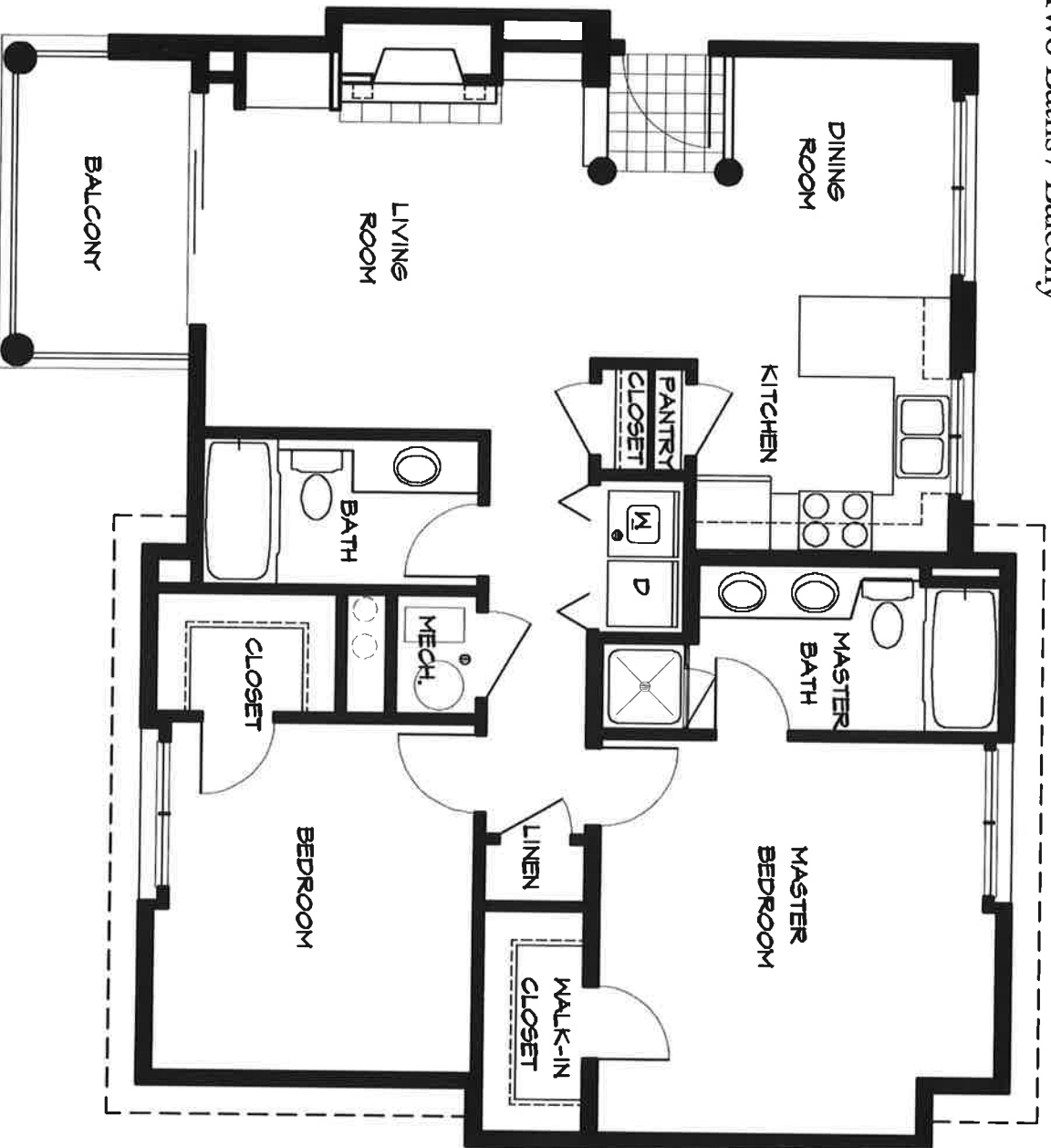


# THE SIERRA

## BUILDINGS A, B & G



Main and Basement Floors 1059 sf / Upper Floor Level 1117 sf  
Two Bedrooms / Two Baths / Balcony



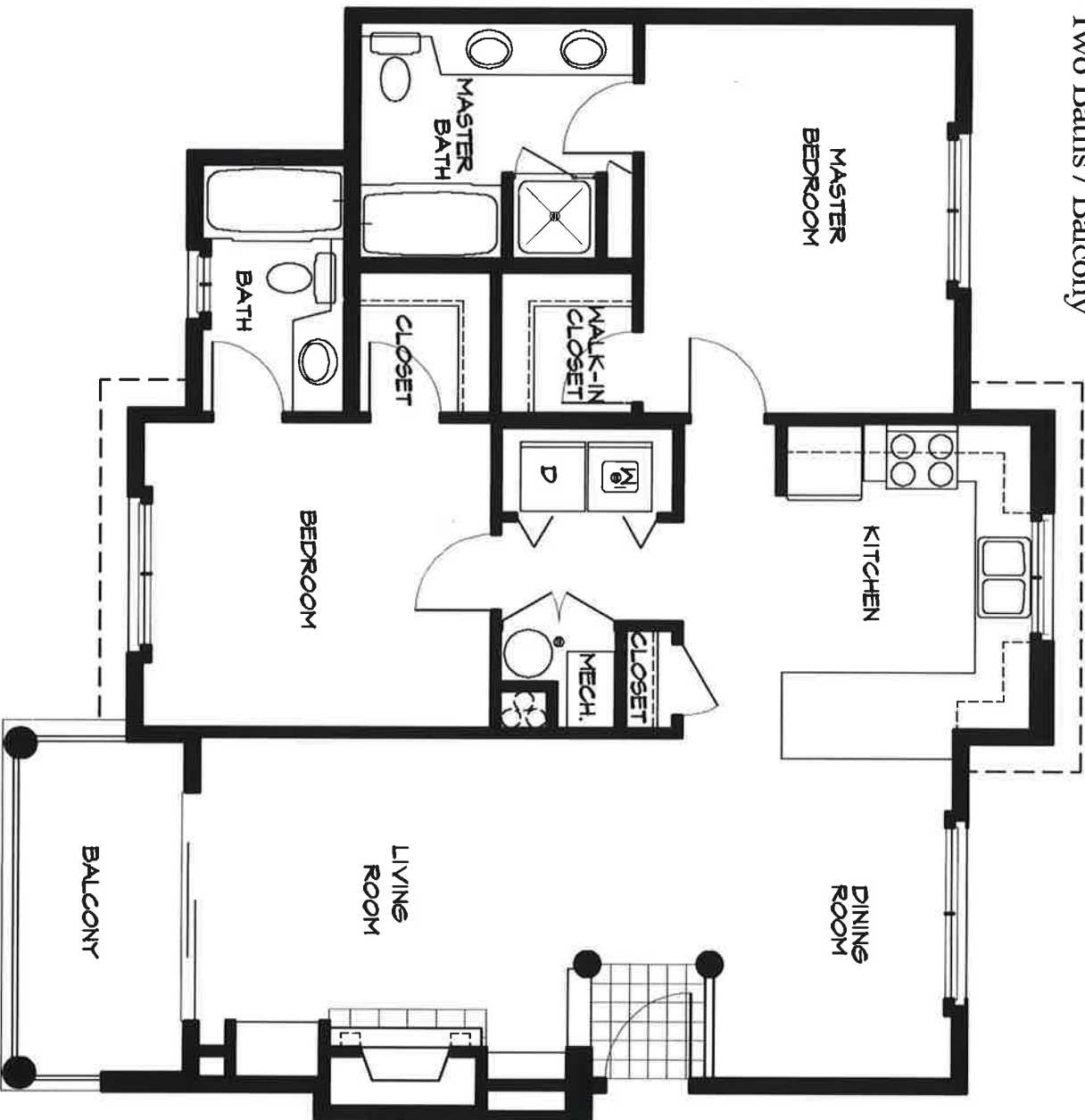
# THE TETON

## BUILDINGS C & I



# PINE CREEK

Main and Lower Floors 1074 sf / Upper Floor Level 1115 sf  
Two Bedrooms / Two Baths / Balcony



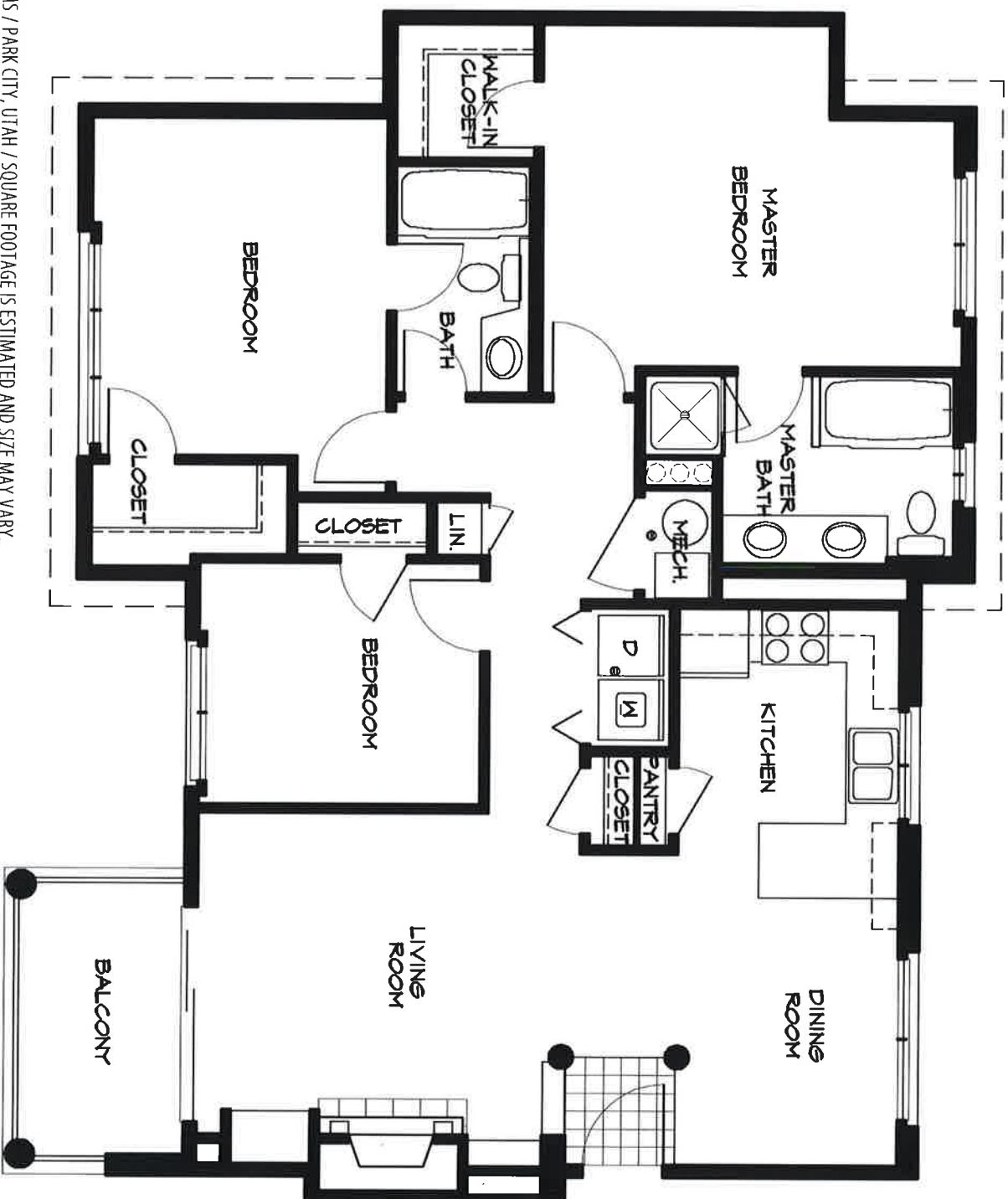
# THE BIGHORN

## BUILDINGS D, E, F & H

Main and Lower Floors 1264 sf / Upper Floor Level 1326 sf  
Three Bedrooms / Two Baths / Balcony



# PINE CREEK



PINE CREEK CONDOMINIUMS / PARK CITY, UTAH / SQUARE FOOTAGE IS ESTIMATED AND SIZE MAY VARY.